



BEAR PAW PRESS

Bear Creek Quilt Guild

Volume 19 Issue 9

September 2010

THE PRESIDENT'S PIECE

Hello Fellow Quilters!

The Dog Days of Summer are coming to an end and fall is just around the corner! That one cooler day we recently had was so nice and I actually walked my dog and didn't break out in a sweat! Maybe I wasn't walking fast enough but that's beside the point. Cool weather is ahead and that means the holidays are coming and you should already be working on those projects. Just remember to bring them to Show & Tell to share with everyone.

At the August Board Meeting one of the items we discussed was our yearly dues. As many of you know we didn't get the income we were hoping for from our quilt show this year. It was a beautiful show but due to the economy and some other factors attendance was just down. Also, workshops haven't been well attended and national speakers are expensive. We would like to continue to have them and we are working to share cost with other guilds. But, we need to come up with ways to help cover our expenses and prepare for our 2012 show. One of the ways we discussed was raising membership dues to \$30.00 a year. This will be voted on by the members at the September meeting. I hope you will attend and vote.

I would like to remind everyone to be sure and introduce yourself to someone you don't know at our next guild meeting. Ask a new member or a visitor to sit with you. Make sure everyone feels welcome when they walk through that door to attend our meetings!

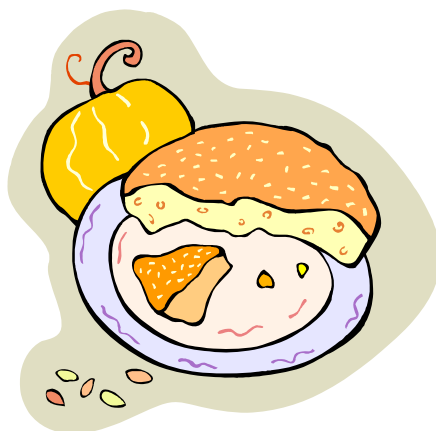
With fall around the corner I thought I would share a Pumpkin Bread recipe with you. Maybe this will help get you in the mood for the holidays!

Pumpkin Bread

3 cups sugar (you can substitute Splenda 1 ½ cups)
1 cup vegetable oil
4 eggs
2 cups canned pumpkin
2/3 cup water
3 1/3 cups all-purpose flour
2 teaspoons baking soda
1 ½ teaspoons salt
1 teaspoon ground cinnamon
1 teaspoon ground nutmeg
½ to ¾ cup chopped pecans or walnuts

Preheat oven to 350 degrees. Grease and flour two loaf pans. Mix sugar and oil with mixer. Add eggs and blend. Add pumpkin and blend. Add water and blend. Combine remaining ingredients and add slowly. Fill pans equally and bake for 1 hour or until golden brown. Let cool for about 10 minutes and remove to a rack to finish cooling. Enjoy!

Michelle



Guild Happenings

September 7

Board Meeting, 6:30 pm

September 21

Guild Meeting

Speaker Bettie Hammock

October 19

Guild Meeting

Speaker Ellen Linder

October 20

Workshop—Double Reverse

Applique

November 16

Guild Meeting

Speaker Debbie Maddy

November 20

Workshop

December 21

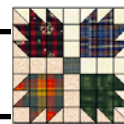
Guild Meeting

Holiday Party

September Meeting

What to bring:

- Name Tag
- Show and Tell
- Quilt Magazines for Recycle Sale
- Library books
- 5 1/2 batik squares

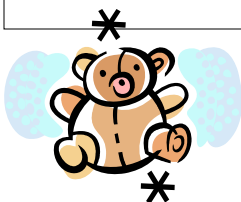


Quilting Tips from Bear Creek Members

1. Make your own Portable Ironing Board to take along to class. Just wrap and glue leftover cotton batting around an empty fabric bolt. Cover with flannel and glue edges. It's very handy and light too. Taken from Blockcentral.com *No name given.*
2. Make friends with a really good quilter. Let them be your mentor. *Michelle Lewis*
3. Mark a piece of tape with ¼ inch and stick it to your index finger. Your finger becomes a ruler with ¼ inch marked on it. *Char Sadley*
4. Blue Painters tape is a great addition to your quilt kit. You can mark ¼ inch on the machine, mark cutting lines on ruler and mark straight quilting lines on quilt top. *Linda Davis*
5. Place all materials for a project in large zip lock bag, label projects and keep a list in order you would like to complete them. *Chris Atwell*
6. Create your own fabric! Just put whatever you want on top of your color scanner/printer, put a piece of white fabric over it (it will have a white background, or if you want put a piece of colored fabric over it and really spice it up) Iron a piece of white muslin to freezer paper, cut down to 8 ½" x 11" put in your printer and you have now created your own fabric. You can use pictures, fruit, anything that will sit on the printer area!! Taken from Blockcentral.com *Twana Grisham*
7. Cleaning out unused scraps and pieces of fabric is easy when you know these will be used for a good cause. G.R.A.C.E. takes fabric scraps in a bag marked "poundage" to be sold to other countries. These scraps are woven into rugs and other projects. Not only do your scraps stay out of the landfills, they help people in our community buy gas to get to work, pay electric bills, etc. and to help others in poorer areas of the world. If you cannot deliver your scraps to G.R.A.C.E. at 112 N. Scribner in Grapevine, #817-416-6939 bring a small bag to guild for *Rosalee Weiler* to deliver.
8. Fan fold larger pieces of fabric so that you can cut off just a 2" strip (for example) and put the rest back in your stash. *Loretta Brennan*
9. Use full sheet of label paper (Office Supply store) for printing appliqué and place on fabric, sticky side down. *Diana Miller*
10. To sharpen your rotary cutters, fold up a piece of silver foil so that you have several layers and then just cut through it several times and your cutter will be sharpened. *Twana Grisham*
11. Wear a rubber band on your index finger of your quilting hand when hand quilting – use it to pull the needle through the fabric when its stubborn. *Judy Shearer*
12. Put each project in its own plastic box. *Dee Watts*
13. Mark flower pins with a sharpie to number your rows in a quilt. Put a pin on the left side of every row. *Paula Burda*
14. Ponytail holders with marbles on the ends are perfect for securing your cords on your machines and irons when going to classes and retreats *Dee Rose*
15. Use craft containers with lids for keeping all pieces of a project together so nothing gets lost. *Liz Loret*
16. Before washing fabrics, safety pin the cut to the cut end. This will prevent fabric from twisting while being washed and dried. *Lema Worley*
17. When threading a needle, do not moisten the thread, it will split. Rather moisten the eye of the needle and the thread will slip right in. *Fran Popek*
18. We all like to fabric shop – so – if you're just looking, buy light or dark – no mediums. We all have that in our stash. *Teaa Lentz*
19. Make your binding strips when you finish piecing your top and pin it to the top. That way it is ready when your quilting is finished. *Janice Irick*
20. If you have an abundance of UFO's and are feeling overwhelmed, make a list of just 5 and work on those, crossing off each one as it's finished. Before too long if you stick to the list only, you'll have all 5 done and will be ready to make your NEXT list of 5!! It really works (ask me how I know! LOL *Sherrill Pecere*)
21. The internet can be a great source of knowledge and inspiration! Some fabric companies have wonderful websites that offer free quilting projects or free patterns to promote their fabric lines. My favorite websites are: Andoverfabrics.com; Windhamfabrics.com; Inthebeginningfabrics.com; Modabakeshop.com, Quiltville.com
Patty Flores
21. To make a spool adapter for thread with a large center hole (Star, etc), cut the top of a large Gutterman empty spool, sand out any rough spots. *Maggie Perkins*
22. Put an arrow on your design wall that tells you which direction to press your seams for that row. *Patricia Shelley*
23. Quilting should be fun and not stressful. Things can always be fixed. Give up cooking and cleaning it takes too much time away from quilting. *Kathi Watkins*

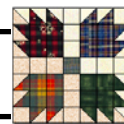


Care Bears



Prayers, visits, and cards for Roxanne Pierce, former president of our guild 2001-2002. She will be in Keller Oaks Rehab for two months.

Prayers for Maggie Perkins on the death of her almost ninety-year-old mother, Mary, who passed away peacefully in Ft. Worth.



more Quilting Tips from Bear Creek Members

24. Always keep a magnet on the sewing table – makes it so easy for picking up errant pins! *Mary Davidson*

25. Do three bobbins, then stop and clean machine & oil if necessary – machine runs better! *Eileen Drennan*

26. Always close rotary cutter when not using. Old rule, but still excellent tip and reminder. *Cindy Sargent*

27. Keep your batting in the guest bathtub or shower – great storage and convenient.. Remember to take out when company comes. *Bonnie Miller*

28. Buy metal magnetic pin holder for your quilt machine from Walmart or Auto store. *Lynn Horvat*

29. When making quilts for children (or friends) add a secret pocket with a little love note in it... only you and the recipient will know where it is if you disguise it well. This is lovely for grandchildren, you can add a new note each time you visit them. *Twana Grisham*

30. Use water soluble tape to attach gathering to another piece of material. Will keep gathers neat. *Yvonne Hylander*

31. Install pegboard with hooks on back of closet door to hang rulers. *Jeana Fiske*

32. While traveling, use a tooth floss container to cut your thread. No problems with security. *Twana Grisham*

33. To Clean a Iron – pour a line of table salt approximately 1/2" x 6" on a terry towel – iron with hot dry iron – residue comes right off. *Sharon Barnes*



34. Block of the Month Blocks can be kept in a round mailing tube. Block & instructions can be rolled up, stored and held in place with a cut toilet paper roll. *Charna Gray*

35. Inexpensive way to make templates – use the return mail post cards that fall out of the magazines to which you subscribe. *Charna Gray*

Bear Creek Quilt Guild Board Minutes

Bear Creek Quilt Guild Board Meeting – August 3, 2010 First United Methodist Church, Keller TX

President Michelle Lewis called the meeting to order at 6:37pm.

In attendance: Michelle Lewis, Kathy Jurich, Eileen Drennan, Shawn Frazier, Loretta Brennan, Kathy Gale, Kimberly Sparks, Kayleen Allen, Donna Coomer

Shawn Frazier made a motion to approve last month's minutes. Kimberly Sparks seconded. Motion passed.

The treasurer report was given by Kathy Jurich. Kathy also stated that the Quilt Show audit has not been done because she is still waiting to receive the July bank statement.

Michelle reported for Charna Gray that the August program is all set and that there will not be a workshop. The next workshop is October 20th, Ellen Linder, Double Reverse Applique, 9am to 3:30pm, Hallelujah House, \$30.

Michelle will request a list of 2011 programs from Charna.

Shawn Frazier reported on the new raffle quilt. She made deposits of money from recent settings. Volunteer sign-ups for next weekend are full. She is starting sign-ups for Shop Hop weekend, Sept 9, 10, 11 at Quilter's Dream. If you would like to sit with the quilt, please call her. Also, please pick up your tickets at the August Guild meeting. And... our raffle quilt will be entered in the Trinity Valley Quilt Show. Go to the show and vote for our quilt for Viewer's Choice!

Donna Coomer is the local representative for Quilts for Kids, a non-profit organization which facilitates the making of quilts for children. She presented information about the organization and this information will be in our September newsletter. Be sure to look for it.

New Business

Michelle will request a Nominating Committee at the August guild meeting.

Discussion ensued regarding possibly raising 2011 membership dues to \$30 and alternative means of increasing income. This will be announced to the membership at the August guild meeting, published in the September newsletter, and voted on at the September guild meeting.

Kathy Jurich made a motion to amend the 2010 raffle quilt budget in the amount of 108.75 to cover the cost of the second printing of raffle tickets. Kimberly Sparks seconded. Motion passed.

The new Hurst Conference Center was discussed as a possible venue for the 2012 Quilt Show.

Old Business

Kathy Jurich made a motion to amend the 2010 Admin/Treasurer budget to up to \$600 to purchase a laptop, flash drive for backups, and a new version of Quick Books. Loretta Brennan seconded. Motion passed.

Meeting adjourned: 7:35pm.

Respectfully submitted,

Loretta Brennan



Bear Creek Quilt Guild Minutes

Bear Creek Quilt Guild Meeting Minutes August 17, 2010, United Methodist Church, Keller Texas

The meeting was called to order at 7:00 pm by President Michelle Lewis.

A motion was made by Charna Gray and seconded by Rachel Cowley to accept the July 2010 guild meeting minutes. The motion carried.

The treasurer report was given by Kathy Jurich.

Workshop chair, Kayleen Allen, reminded members that the last workshop of the year will be October 20 and the topic will be double reverse appliqué. Please sign up and support this workshop so that the guild can continue to bring in national speakers. The cost is expensive and a full class would be wonderful.

Paula Burda thanked members for bringing in back to school supplies for ASAP. Monetary donations were also accepted.

Michelle Lewis announced that the special projects activity for September would be a continuation of August's 5 1/2 inch batik squares.

Membership chair, Patty Flores, reported attendance tonight was 80 members, 1 new member and 6 visitors.

Dot Lang reminded members that CD's of the quilt show are still available. Please let Dot know if you would like to purchase one at the cost of \$2.

Raffle quilt ticket sales, Shawn Frazier, stated that raffle tickets are available for pickup. Pictures of the quilt are available. Please contact Shawn if you would like to sit with the quilt and sell tickets at the Shop Hop on September 9-11 at Quilter's Dream. She reported that she recently sold tickets at the Granbury Guild and that they were extremely supportive and purchased many tickets. She asked members to please support them

when they came to sell tickets at one of our future meetings.

Rosalee Weiler stated that the guild was given several books on making patriotic quilts for the exhibit that was held at the April quilt show. Books were passed out to members interested in participating. Entry blanks are available from Joanne Shepherd.

Happy Johns reported that there are still slots available for the 2 day or Sunday only trip to the quilt show in Houston. Please contact her if you are interested.

Lynn Horvat thanked everyone who has volunteered to help finish quilts for a friend of hers who has terminal cancer. Contact Lynn if you would like to help.

In new business, Michelle Lewis announced that all board positions are open for the up coming year. Many committee chair positions will also be available. Charna Gray will head the nominating committee and Kayleen Allen and Rosalee Weiler volunteered to help. Everyone was asked to consider volunteering for a position for 2010-2011.

At the August board meeting, Michelle stated that a discussion was held about raising the guild dues to \$30 a year. A vote will be taken at the September guild meeting.

Door prizes were awarded by Rose Steinmetz and Lema Worley.

Show and Tell was hosted by Eileen O'Neal.

The meeting was adjourned at 7:22pm.

The speaker, Barbara Oliver Hartman, was introduced by Charna Gray.

Respectfully submitted,
Judy Shearer, Secretary

September Birthdays

Deb Batz	September 2
Lema Worley	September 3
Rachel Cowley	September 5
Peggy Hamil	September 6
Margaret Kuntz	September 6
Gay Agan	September 9
Patty Flores	September 11
Barbara Bennett	September 13

Linda Davis	September 13
Kathi Watkins	September 14
Pam Braunreiter	September 21
Paula Burda	September 23
Patty Cashon	September 25
Sue Ellis	September 25
Terry Freeman	September 25



Membership Report

At the August meeting, we had 80 members signed in. There were 4 visitors...

Tabatha Smith from Hurst
Lorine (I think) Allen from Richland Hills
Kymberli Herron (Ima Ruth's DGD) from San Marcos
Brenda Palone (Carolyn's DD) no addy given

We're so glad to have them visit and hope they'll be back!!

One new visitor joined us--

Kathy Smith 3/25
7416 Woodhaven Dr.
NRH, TX 76182
817-514-7331 (H)
817-271-1323 (C)
kms323@att.net

Please add her to your directory and make the following changes as well

Jane Weil
611 Knott Ct.
Euless, TX 76039

Brenda Bowen
2801 Denton Tap Rd. #523
Lewisville, TX 75067
972-459-0185
BD.Bowen@verizon.net

Sherrill

VICTORIAN HOUSE RETREAT

Weatherford, Texas

Plan your next Retreat In Weatherford

(45 min. from Keller)

Sleeps 12 — Twin beds for everyone (no bunks)

Comfortable Chairs

Everyone has their own table

Ironing boards and cutting tables

Full Kitchen — 2 baths

Everything provided except food and sewing projects

Great for quilters and scrapbookers

Contact Barb Chamblee 817-475-9009

Email—chambleebarb@gmail.com

www.victorianhouseretreat.com

Fort Worth
fabric studio

Check us out at :
www.FortWorthFabricStudio.com

LOCAL PICKUP IS AVAILABLE
at our N. Richland Hills address
(or we can ship)

Online quilt shop ~ fabrics ~ kits
patterns ~ bundles ~ fat quarters
jelly rolls ~ weekly Bundle Batch™
monthly Fab Fats ~ simply inspiring!



August Show & Tell

Name	Name of Quilt	Name of Quilter
1. Lucy Suggs	Olivia's Quilt	Lucy Suggs
2. Jackie Cleghorn	Baby Blossoms	Jackie Cleghorn
3. Peggy Burrell	Chiclet Quilt	Peggy Burrell
4. Kathy Jurich	Awesome Log Cabin	Julie Lawson
5. Rachel Cowley	Jeffrey	Rachel Cowley
6. Wannabee Bee	Donation for Open Arms	Kathy Gale
7. Rosemary Dawes	\$3 Celebration	Rosemary Dawes
8. Marge Kuntz	Snowflakes & Mittens	Julie Lawson
9. Happy Johns	Unnamed	
10. Lee Moore	Donation Quilt for Allen Quilt Guild	

2011 Committee Chairs Needed

New Member Liaison: Committee Chairman acts as the liaison with new members to help them transition into Guild membership. Sends out a welcome letter or email when they first join. Sends out emails, when needed, to help explain ongoing Guild activities. Informs the Bee Keeper of new members. Plans the New Member Tea to be held sometime in the spring. Works closely with Hospitality Chairman for this event. A New Member Sew-In, or other activity, can be held in the fall. The New Member Liaison Chairman should be available to new members to answer questions pertaining to the Guild and help them to become an active member of the Guild.

Care Bears: Collects information about guild members for publication in the newsletter and personal acknowledgement. Sends cards to the sick or bereaved.

Newsletter: The newsletter Chairman collects articles to be published in the monthly newsletter from the various officers, chairs and members. At the end of each month these articles are arranged in a Publisher file (the guild has the Publisher computer program). They include the minutes from meetings, a president's report, a membership report, quilt show news, bee news, upcoming quilting events, etc. When the newsletter is put together it is emailed to the webmistress for distribution to the membership via the web. A copy (pdf file) is saved and emailed to area guilds. A handful of copies are printed and mailed to members requesting hard copies of the newsletter.

Email Notices: Monitors guild email account daily; maintains email addresses of current guild membership and board; sends email notifications and reminders of upcoming events and meetings; and provides monthly notification of newsletter availability online.

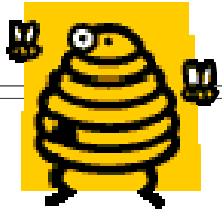
Librarian: Maintains the lending library of the guild, collects late fees for past due items, maintains inventory of library.

Membership: As membership chair, you will primarily be responsible for maintaining the membership roster, keeping it up to date and notifying members of changes in contact info. for other guild members as well as new members and their info. When the guild's new membership year rolls around, dues and new membership forms will be collected from all members, info. from same will be input on the spreadsheet on the computer and that info. will be put into directory format and printed for distribution to all members in good standing (I highly recommend being pretty computer savvy for this!!). You will also write a brief summary each month for the newsletter as well as be in attendance (early) every month for the guild meeting since you will be bringing the sign-in sheet, new membership forms, etc. Please let me know if you have any questions..the busiest time for this job is, obviously, when the dues for the year are collected and getting the directory printed.

Door Prizes: The duties as door prize chair are calling all participating quilt stores in Jan. and asking them if they plan to donate door prizes. If they agree, I ask them when would be a good time to pick them up and also tell them I will only come by once this year and if they could donate all the items or gift certificates at that time it would be greatly appreciated. I also will send out a thank you letter in Dec. thanking them for the donations they gave in 2010. We pass out the door prize tickets as quilters arrive at the Guild meeting and then draw winning tickets during the meeting.

Raffle Ticket Sales: To be done properly, this job should be done by at least a committee of 2. This is a time consuming job for just one person. especially if that person is working full time.

Responsible for ordering, distributing, and selling Raffle tickets and the collection of funds from those ticket sales. Schedules and coordinates volunteers to sit with Raffle Quilt and sell tickets at local shops, other guild meetings and special events. Works closely with treasurer. Gathers charity information from guild members and sets up voting for said charities, and makes sure checks get distributed as voted on.



Bee In the Spotlight

Pins & Needles

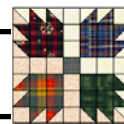
Pins and Needles is a bee made up of some amazing women! They are not only talented but they are kind, caring, and some of the most generous women I have ever had the pleasure to know. Nearly every member is on the guild board, a committee chair, or they've been a committee chair. They believe in getting involved in the guild and helping out where they can because they love it. We have the best time when we get together. Each of us brings our own project to work on, we help one another, share ideas, celebrate birthdays, and just have a good time.



The group meets the second and fourth Mondays of the month at night. Quilters Dream allows us to use one of the retreat rooms. At the present time we have fifteen members who are; Ana Cannon (our newest member), Cindy Sargent , Eileen Drennan , Janice Irick , Joyce Bohan , Karen Scribner, Kathy Gale, Kathy Jurich , Kayleen Allen , Linda Davis , Mau-

reen Ciemian , Michelle Lewis, Rosalee Weiler, Shawn Frazier , and Teresa Bristow. We are losing Kathy Gale next month. Her husband took a job in Oklahoma and for some reason she wants to go with him instead of staying with us. Ha! Ha!





October Workshop

Wednesday, October 20, 2010

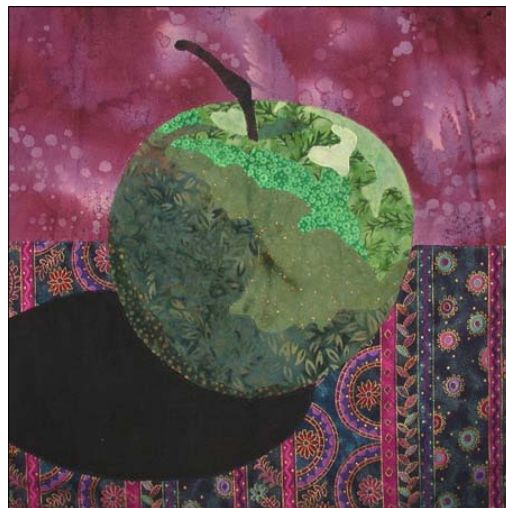
Instructor

Ellen Linder

Sign up now for the October Workshop. National quilt instructor Ellen Linder will be teaching a technique called Double Reverse Appliqué. The technique uses free motion quilting and a raw edged appliqué method that easily makes into a work of art.

See her website at www.adventurequilter.com.

Fill out the registration form below or email Kayleen Allen to keep a spot in this class. kayleen_allen@yahoo.com



WORKSHOP REGISTRATION

Instructor: _____ Date: _____

Time: _____ Fee: - member \$ _____

Materials Fee: _____ (pay to the instructor)

Name: _____

Phone: _____ Email: _____

Total Paid: _____ cash or check # _____

Make checks payable to **Bear Creek Quilt Guild**

Mail to: Kayleen Allen, 511 Arbor Oak Dr. Grapevine 76051

****** PAID registrations get priority reservations. ******

Class materials and other information will be provided the week before the Workshop or when you sign up.



Members in the News

If your quilt has made news recently, send a picture of you and the quilt to kathy_gale@yahoo.com

Care Bears

If you have an item for "Care Bears", send to Jeana Fiske JeanaUSA@msn.com
Phone (817) 416-6215

Bee News

If you have an activity or picture for "Bee News", send to Teresa Bristow at TPBristow@verizon.net
Phone 817-488-8864

NEWSLETTER

Deadline for the newsletter is
the 25th of the month.

Please send all articles worded as you would like them printed to Kathy Gale,
kathy_gale@yahoo.com

ADVERTISEMENT RATES

Advertisements may be submitted electronically or by camera-ready art on or before the 25th of each month. Advertisements must be paid in advance. If you are interested, please contact me via phone, email or mail.

Kathy Gale
3205 Walker Pl.
Grapevine, TX 76051
817-488-3505 (home) 281-714-6343 (mobile)
kathy_gale@yahoo.com

Size	1 month	3 months	6 months
Business Card	\$ 7.00	\$ 20.00	\$ 40.00
1/4 page	14.00	40.00	80.00
1/2 page	28.00	80.00	160.00

BCQG OFFICERS

President	Michelle Lewis	817-741-5792
1st Vice Pres.	Charna Gray	817-318-8229
2nd Vice Pres.	Loretta Brennan	817-251-1234
Secretary	Judy Shearer	817-741-5090
Treasurer	Kathy Jurich	817-562-4550
Past President	Kimberly Sparks	817-656-5007

COMMITTEE CHAIRS

Beekeeper	Teresa Bristow	817-488-8864
Care Bears	Jeana Fiske	817-416-6215
Comm. Serv.	Linda Davis	817-488-5325
Door Prizes	Rose Steinmetz	817-379-6442
	Lema Worley	817-788-0648
E-mail Notices	Lucy Suggs	817-379-1209
Historian	Joyce Bohan	817-488-9352
Hospitality	Tara Intardonato	817-485-7151
Librarian	JoAnne Sheppard	817-431-9505
	Linda Anderson	817-329-3228
Magazines	Michelle Lewis	817-741-5792
Membership	Sherrill Pecere	817-741-4470
	Patty Flores	817-605-0467
New Mbr Liaison	Betty Lou Cross	817-741-8665
Newsletter	Kathy Gale	817-488-3505
Outings	Bonnie Miller	817-431-8734
Property	Linn Jencopale	817-431-9674
Publicity	Kathy Popik	682-831-9383
Show & Tell	Eileen O'Neal	817-281-0032
Special Projects	Dee Watts	817-656-7442
	Nance Elmore	972-853-8932
TAQG	Sandra Hardin	817-485-7869
	Charna Gray	817-318-8229
Telephone	Paula Burda	817-788-2407
Web Mistress	Dot Lang	940-629-2240
Workshops	Kayleen Allen	817-481-0059
	Eileen Drennan	817-416-7145
2011 Raffle Quilt	Donna Hansen	817-514-4961
	Rosalee Weiler	817-488-9624
2011 Raffle Tickets	Shawn Frazier	817-909-2161

OTHER QUILT SHOWS and ACTIVITIES

Stitches From the Heart'

September 3—5

Vereins Quilt Guild of Fredericksburg
Gillespie County Farm Bureau
Fredericksburg, Texas

www.verainsquiltguild.com

'Binding Borders Around the World'

Coastal Prairie Quilt Guild

September 10—11

Stafford Center, Stafford TX

www.cpqg.org

'Changing Gears Quilt Show'

Austin Area Quilt Guild

September 17—19

Lester E Palmer Events Ctr, 900 Barton Springs Rd

www.cpqg.org

'Artistry in Fiber'

Lone Star Heritage Quilt Guild

September 17—18

Hopkins County Civic Ctr, 1200 Houston St

Sulphur Springs, TX

www.sulphurspringstxquilts.com

'Everyday Heirlooms: Every Quilt Tells a Story'

Trinity Valley Quilt Guild

September 17—19

Amon Carter Center, Fort Worth

www.tvqg.org

'Stitches From the Heart'

September 24 - 25

Quilter's Guild of Parker County

2251 Mineral Wells Hwy, Weatherford, TX

www.quiltersguildofparkercounty.org

'Shades of Texas'

October 1 & 2

Crossroads to Texas Quilt Guild

Killeen Civic Center

2601 S WS Young Dr, Killeen TX

www.cttquilt.org

International Quilt Festival Houston

Nov 4—7

George R Brown Convention Center

www.quilts.com

Bear Creek Quilt Guild

PO Box 1322

Keller, TX 76244-1322

www.bearcreekquiltguild.org

Secret Word:

Shop hop